

Choose the Original
Choose Success!



picture without protective grid



picture shows drive station MEWIS-C40-PC

PROFI-LINE

Hardened Concrete Test

Compression Testing Machine ALPHA 2-3000 S

special suitable for triaxial rock testing

- accuracy acc. to DIN EN ISO 7500-1, class 1
- execution acc. to EN 12390-4 (straintest execution)
- compression strength tests acc. to EN 12390-3, EN 12504-1, EN 206 on concrete and high strength concrete as well as bricks acc. to EN 772
- separate drive station AS-C40-N / AS-C40-N-PC / MEWIS-C40-PC
- automatical load increase by digital controller **DIGIMAXX® C40** or **DIGIMAXX® C30** with servo valve in closed loop system with nominal-actual value comparison

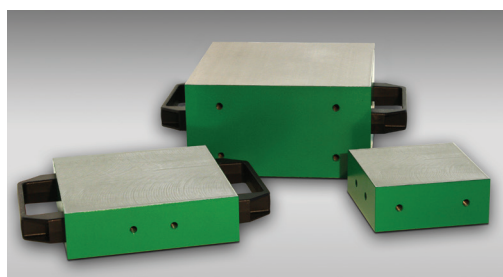
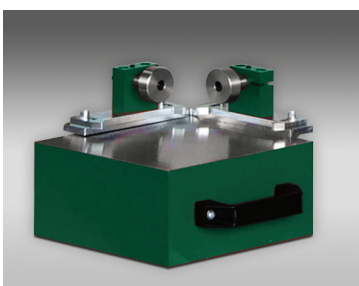
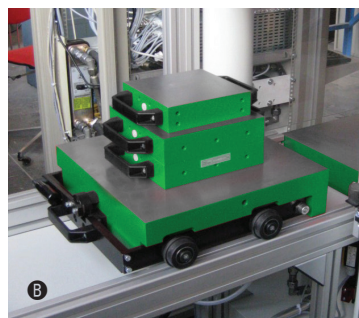
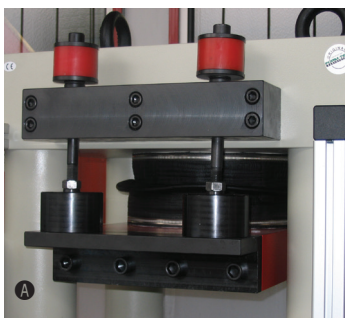
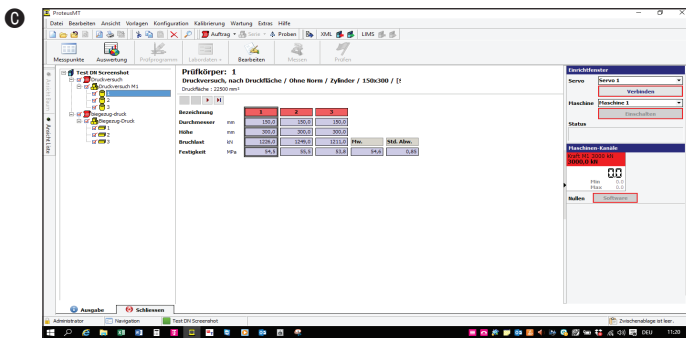
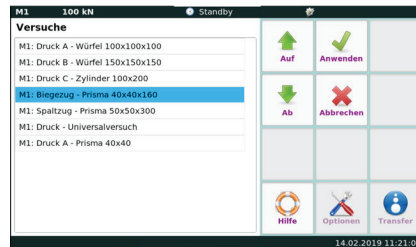
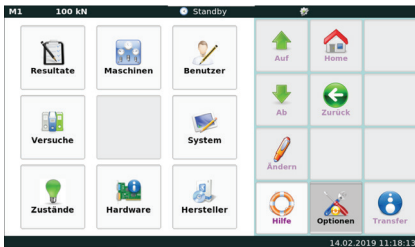
Technical Data – Test Frame

- test load max.: 3000 kN (compression)
1800 kN (tension)
- piston stroke: 100 mm
- upper pressure plate: Ø 415 mm (or more)
- lower pressure plate: Ø 415 mm (or more)
- thickness of pressure plates: 97 mm (or more)
- platen diameter: Ø 415 mm
- height of test area: 900 mm
- measuring range: 100 ... 3000 kN
- display area: 0 ... 4000 kN
- hardness of pressure plates: 58 HRC
- double acting cylinder
- force measurement via electronic liquid pressure transducer
- weight: approx. 7240 kg

Options:

- higher stiffness up to 9000 kN/mm

available up to test load: 10000 kN



Technical Data – Digital Controller

- capacitive and robust 7" touch display
- PID-controller with DSP processor
- modular system with expansion options up to 8 control and measuring channels – 18 Bit
- measuring- and control cycle 2 kHz
- transmission of measured value up to 1 kHz
- freely programmable test sequences
- real-time display of the measuring channels as well as of the specimen strengths and test speed
- authorization model with different role and access authorizations (tester, laboratory manager, service technician, administrator)
- automatic and manually zero-adjustment
- adjustable break detection
- adjustable piston back-travel time
- specimen storage for test results
- 6 digital inputs galvanically isolated
- 9 potential-free relay outputs
- USB port for data export
- Ethernet connection for communication with PC software

Options - Test Frame:

- chrome-plated columns
- larger (higher) test area
- piston stroke extension to 200 mm
- larger pressure plates
dimensions: 420 x 520 x 97 mm
dimensions: 380 x 620 x 97 mm
- extendable pressure plate
- reinforcement for high strength concrete
- reinforcement for brick testing

Options - Drive Stations:

- 2. connection for further test frame, e.g. bending test frame
- 2., 3. and 4. connection for further test frames, e.g. bending test frame
- magnetic switch
- electronic piston stroke measuring and control equipment
- test software **PROTEUS^{MT}**



FORM+TEST Seidner & Co. GmbH
 Zwiefalter Str. 20 • D-88499 Riedlingen
 phone: +49 (0) 7371 9302-20 • fax: -99
 www.formtest.de
 sales@formtest.de