

Choose the Original  
Choose Success!

## PROFI-LINE

Hardened Concrete Test

### Compression Testing Machine ALPHA 3-2000

- accuracy according to DIN EN ISO 7500-1, class 1
- execution acc. to EN 12390-4 (straintest execution)
- for compression strength tests according to EN 12390-3, EN 12504-1 and EN 206
- separate drive station AS-C40-N / AS-C40-N-PC / MEWIS-C40-PC
- automatic load increase by digital controller **DIGIMAXX® C40** in closed loop system



Fig: testing machine frame with chromium plated machine's columns (options)

#### Technical Data – Test Frame

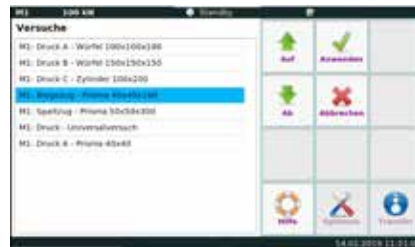
- test load max.: 2,000 kN
- working pressure max.: 407 bar
- piston stroke: 100 mm
- upper pressure plate: Ø 320 mm
- lower pressure plate: Ø 300 mm
- thickness of pressure plates: 75 mm
- hardness of pressure plates: 55 HRC
- test chamber height: 340 mm
- clear distance between columns (width): 355 mm
- clear distance between columns (depth): 255 mm
- stiffness: 2,950 kN/mm
- measuring range: 40 ... 2,000 kN
- display area: 0 ... 2,000 kN
- force measurement via electronic pressure transducer
- voltage: 3 x 400 Volt, 50 Hz, 1.5 kW
- weight: 1,810 kg



Fig. drive station MEWIS-C40-PC

#### MEWIS-C40-PC

- measuring- and weighing station for efficient measuring and weighing of specimens

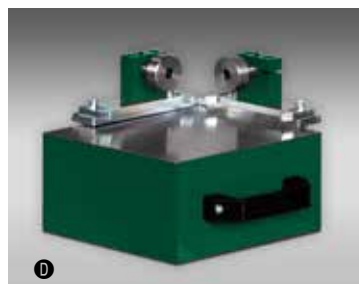
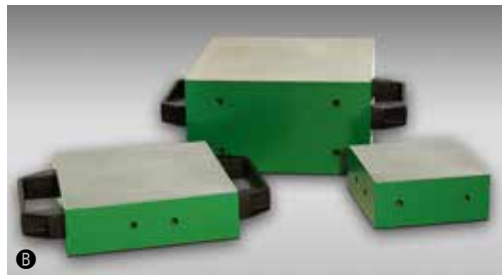


### Technical Data – Digital Controller

- capacitive and robust 7" touch display
- PID-controller with DSP processor
- modular system with expansion options up to 8 control and measuring channels – 18 Bit
- measuring- and control cycle 2 kHz
- transmission of measured value up to 1 kHz
- freely programmable test sequences
- real-time display of the measuring channels as well as of the specimen strengths and test speed
- authorization model with different role and access authorizations (tester, laboratory manager, service technician, administrator)
- automatic and manually zero-adjustment
- adjustable break detection
- adjustable piston back-travel time
- specimen storage for test results
- 6 digital inputs galvanically isolated
- 9 potential-free relay outputs
- USB port for data export
- Ethernet connection for communication with PC software

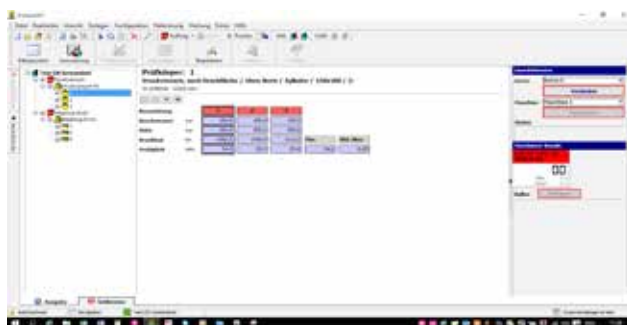
### Accessories:

- Ⓐ sparing blocks, unhardened, face-ground, to place between pressure platen and piston, fixing by a dowel pin  
dimensions Ø 300 x 50 mm, 27 kg  
dimensions Ø 300 x 60 mm, 33 kg
- Ⓑ auxiliary platen hardened, face-ground to place on the pressure plate  
dimensions 210 x 210 x 110 mm, 38 kg  
dimensions 170 x 170 x 50 mm, 12 kg  
dimensions 120 x 120 x 50 mm, 5,65 kg



### Options:

- connection of further (max. 4) testing machines
- larger pressure plates  
dimensions 320 x 420 x 75 mm  
dimensions 320 x 520 x 75 mm
- higher test area
- chrome-plated columns
- Ⓒ centering devices for pressure plates
- Ⓓ centering devices for auxiliary platens
- transfer software
- Ⓔ test software **PROTEUS<sup>MT</sup>**



**FORM+TEST Seidner & Co. GmbH**  
 Zwiefalter Str. 20 • 88499 Riedlingen  
 phone: +49 (0) 7371 9302-20 • fax: -99  
 www.formtest.de  
 sales@formtest.de