



BASIC-LINE

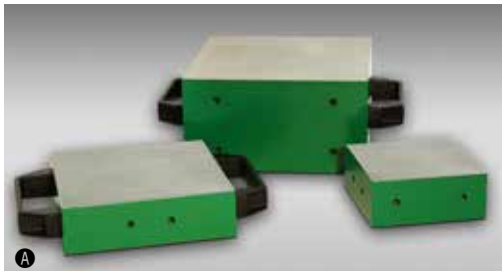
Compression Testing Machine

ALPHA 3-3000 AD

- accuracy acc. to DIN EN ISO 7500-1, class 1
- execution acc. to EN 12390-4 (straintest execution)
- for the determination of compressive strengths acc. to EN 12390-3, EN 12504-1 and EN 206
- automatic load increase via digital controller **DigiMaxx® C44** bypass-control for constant load increase controllable as ramp function between 0.1 - 50 kN/s

Technical Data

- test load max.: 3,000 kN
- working pressure: 454 bar
- piston stroke: 65 mm
- upper pressure plate: Ø 320 mm
- lower pressure plate: Ø 300 mm
- hardness of pressure plates: 53-55 HRC
- thickness of pressure plate: 75 mm
- test area height: 340 mm
- working height: 920 mm
- inner width of test frame:
from left to right (width): 355 mm
front to back (depth): 255 mm
- measuring range: 60 ... 3,000 kN
- display area: 0 ... 3,000 kN
- stiffness: 3650 kN/mm
- compact design
- with machine base for hydraulics and electronics
- lateral housing for display and controller
- electric multi-piston hydraulic pump mounted in the oil tank
- pressure control valve
- liquid pressure transducer (DMS)
- electric supply:
230 V, 50 Hz, 1.5 kW
- dimensions approx.
(width x depth x height):
1,360 x 580 x 1,600 mm
- weight: approx. 1,780 kg



Technical Data – Digital Controller

- capacitive and robust 7" touch display
- PID-controller with DSP processor
- measuring- and control cycle 2 kHz
- transmission of measured value up to 1 kHz
- freely programmable test sequences
- real-time display of the measuring channels as well as of the specimen strengths and test speed
- authorization model with different role and access authorizations (tester, laboratory manager, service technician, administrator)
- automatic and manually zero-adjustment
- adjustable break detection
- adjustable piston back-travel time
- specimen storage for test results
- USB port for data export
- Ethernet connection for communication with PC software

Accessories / Options:

- ➊ auxiliary platen hardened, face-ground to place on the pressure plate dimensions + weight:
210 x 210 x 110 mm - 38 kgs
170 x 170 x 50 mm - 12 kgs
120 x 120 x 50 mm - 5,65 kgs
- ➋ spacing blocks unhardened, face-ground, to place between pressure platen and piston, fixing by a dowel pin dimensions + weight:
Ø 300 x 60 mm - 33 kgs
Ø 300 x 50 mm - 27 kgs
- ➌ centering device for pressure plates and auxiliary platen
- larger pressure plates dimensions:
320 x 320 x 75 mm
320 x 420 x 75 mm
320 x 520 x 75 mm
- ➍ test software **PROTEUS^{MT}**
- transfer software



FORM+TEST Seidner & Co. GmbH

Zwiefalter Str. 20 • D-88499 Riedlingen

phone: +49 (0) 7371 9302-20 • fax: -99

www.formtest.de

sales@formtest.de