



ECONOMY-LINE

Compression Testing Machine

ALPHA 3-2000 SD

- accuracy acc. to DIN EN ISO 7500-1, EN 12390-4, class 1
straintest execution
- for compressive strength tests on material samples especially acc. to EN 12390-3, EN 12504-2, EN 206
- automatic load increase by digital controller **DigiMaxx® C-40** with servo valve in closed loop system with nominal-actual value comparison

Technical Data - Compression Test

- test load max.: 2,000 kN
- piston stroke: 100 mm
- upper pressure plate: Ø 320 mm
- lower pressure plate: Ø 300 mm
- hardness of pressure plates: 53 HRC
- test area height: 340 mm
- inner width of test frame: 355 x 255 mm
- measuring range: 40 ... 2,000 kN
- display area: 0 ... 2,000 kN
- force measurement via electronic liquid pressure transducer

Compact Base UB 02-C40

- machine base with lateral housing for the display / controller / hydraulics
- modular design for the extension up to 4 machine frames
- electric multi-piston hydraulic pump mounted in the oil tank
- microfilter with mechanic dust indication
- servo valve
- pressure control valve
- liquid pressure transducer (DMS)
- electrical control

Technical Data - Pump Aggregate

- pump delivery rate: 1.5 l/min.
- oil tank capacity: 20 ltr.
- viscosity of hydraulic oil: 68 cstk / 40
- oil filtration: 3 micron
- electric supply:
3 x 400 V, 50 Hz, 3.0 kW
- dimensions approx. (width x depth x height): 1,360 x 580 x 1,600 mm
- weight: approx. 1,780 kg





Technical Data – Digital Controller

- capacitive and robust 7" touch display
- PID-controller with DSP processor
- modular system with expansion options up to 8 control and measuring channels – 18 Bit
- measuring- and control cycle 2 kHz
- transmission of measured value up to 1 kHz
- freely programmable test sequences
- real-time display of the measuring channels as well as of the specimen strengths and test speed
- authorization model with different role and access authorizations (tester, laboratory manager, service technician, administrator)
- automatic and manually zero-adjustment
- adjustable break detection
- adjustable piston back-travel time
- specimen storage for test results
- 6 digital inputs galvanically isolated
- 9 potential-free relay outputs
- USB port for data export
- Ethernet connection for communication with PC software

Accessories:

- Ⓐ auxiliary platen hardened, face-ground to place on the pressure plate dimensions + weight:
210 x 210 x 110 mm - 38 kgs
170 x 170 x 50 mm - 12 kgs
120 x 120 x 50 mm - 6 kgs
- Ⓑ spacing blocks, unhardened, face-ground to place between pressure platen and piston dimensions + weight:
Ø 300 x 60 mm - 33 kgs
Ø 300 x 50 mm - 27 kgs
- Ⓒ tensile splitting test device
- Ⓓ test software **PROTEUS**

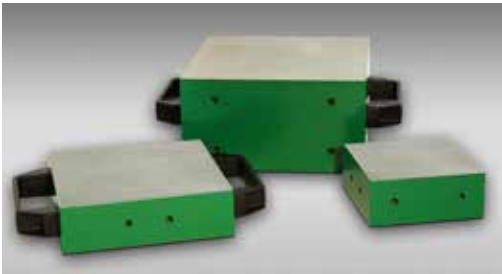
Options:

- larger (higher) test area
- larger pressure plates dimensions:
320 x 320 x 75 mm
320 x 420 x 75 mm
320 x 520 x 75 mm



FORM+TEST Seidner & Co. GmbH
 Zwiefalter Str. 20 • D-88499 Riedlingen
 phone: +49 (0) 7371 9302-20 • fax: -99
www.formtest.de
sales@formtest.de

Ⓐ



Ⓑ



Ⓒ



Ⓓ

