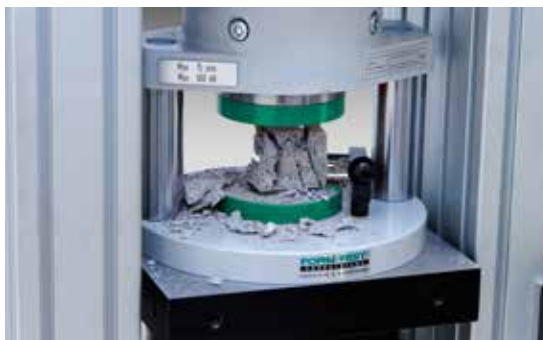


Choose the Original
Choose Success!



Compression Testing Machine MEGA 110-200 DM1-S

- accuracy according to DIN EN ISO 7500-1, class 1
- for compressive strength tests on material samples especially acc. to EN 196, EN 1015, EN 13813, EN 13892-2, EN 12504-1 and EN 993-5
- automatic load increase by digital controller **DIGIMAXX® G-40** with servo valve in closed loop system with nominal-actual value comparison

Technical Data – Test Frame

- test load max.: 200 kN
- working pressure max.: 192.55 bar
- piston stroke: 50 mm
- upper pressure plate: 40 mm
- lower pressure plate: 40 mm
- hardness of pressure plates: 58-62 HRC > 600 HV
- test area height: 50 mm
- inner width of test frame: 226 mm
- measuring range: 2.00 ... 200 kN
- display area: 0 ... 200 kN
- force measurement via electronic load cell which is insensitive to shear force
- voltage: 3x 400 Volt, 50 Hz, 1.5 kW
- weight approx.: 275 kg



Technical Data – Digital Controller

- capacitive and robust 7" touch display
- PID-controller with DSP processor
- modular system with expansion options up to 8 control and measuring channels – 18 Bit
- measuring- and control cycle 2 kHz
- transmission of measured value up to 1 kHz
- freely programmable test sequences
- real-time display of the measuring channels as well as of the specimen strengths and test speed
- authorization model with different role and access authorizations (tester, laboratory manager, service technician, administrator)
- automatic and manually zero-adjustment
- adjustable break detection
- adjustable piston back-travel time
- specimen storage for test results
- 6 digital inputs galvanically isolated
- 9 potential-free relay outputs
- USB port for data export
- Ethernet connection for communication with PC software

Options:

- larger (higher) test area
- larger pressure plates
dimensions 110 x 110 x 30 mm
dimensions Ø 210 x 40 mm
dimensions 210 x 210 x 40 mm
- A** compression device DV 600 AZ
- B** bending device BV 10 OM
- C** compression device DV 600
- D** prism splitting device
- E** measuring equipment for modulus of elasticity
- test software **PROTEUS^{MT}**
- transfer software
- electronic piston stroke measuring and control equipment

Available with following test loads:

- 100 kN, 200 kN, 300 kN



FORM+TEST Seidner & Co. GmbH
 Zwiefalter Str. 20 • D-88499 Riedlingen
 phone: +49 (0) 7371 9302-20 • fax: -99
 www.formtest.de
 sales@formtest.de

